

**Executive Report**

# **WATER FOOTPRINT OF VALÈNCIA TOURIST ACTIVITY**

**Referencial Water Footprint Network**

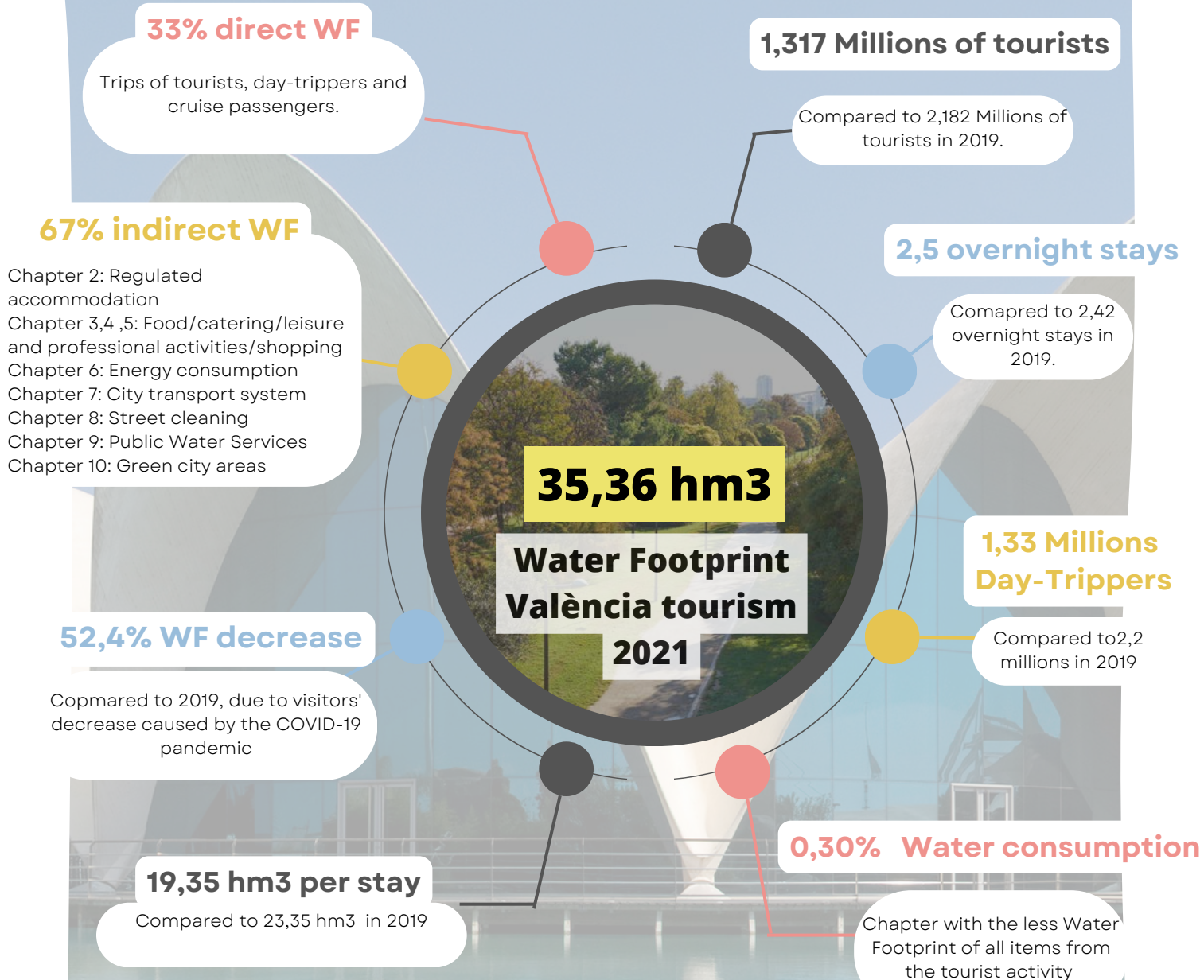
**"When something cannot be defined, you cannot  
measure it; if you cannot measure it, you cannot  
improve it; if you cannot improve it, it is  
degraded."**

LORD KELVIN

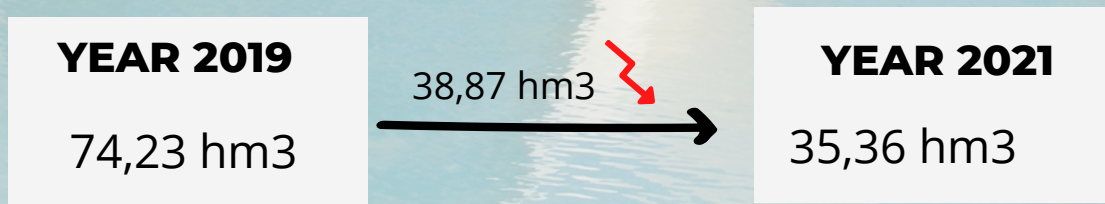


Report date: May 2023

# ACTIVITY RATIOS



## 2019- 2021 WATER FOOTPRINT COMPARISON:



THE REDUCTION OF VISITORS FROM 2019 TO 2021 IN 39,60% LEADS TO A REDUCTION OF THE WATER FOOTPRINT OF 52,4% IN 2021 AGAINST 2019.

# Water footprint Chapters Year 2021



**Total: 35,36 hm<sup>3</sup>**



**1**

## 1. TOURIST DESTINATION

**Total: 2,38 hm<sup>3</sup>**

- Tourists: 0,87 hm<sup>3</sup>
- Day-trippers: 0,12 hm<sup>3</sup>
- Cruise passengers: 1,39 hm<sup>3</sup>

## 2. ACCOMMODATION

**Total: 10,47 hm<sup>3</sup>**

- Hotels: 5-1 stars
- Hostels/B&B/Tourist apartments.
- Campings and Guest House
- Registered Tourist Apartments (HTUs)

**2**



**3-5**

## 3-5 FOOD/CATERING/LEISURE AND PROFESSIONAL ACTIVITIES

**Total: 20,82 hm<sup>3</sup>**

- Tourists: 13,81 hm<sup>3</sup>
- Day-trippers: 6,28 hm<sup>3</sup>
- Cruise passengers: 0,73 hm<sup>3</sup>

## ENERGY CONSUMPTION

**Total: 0,55 hm<sup>3</sup>**

- Street lighting
- Roads and traffic lights
- Fountains and Parks
- Public Lighting of Monuments
- Private Lighting of Historic or Artistic Buildings

**6**



**7**



## 7. CITY TRANSPORT SYSTEM

**Total: 0,01 hm<sup>3</sup>**

- Intra-Urban Transport: Underground, Bus, Taxi and Car
- Car Rental/Hire

## 8. LIMPIEZA VIARIA

**Total: 0,000000305 hm<sup>3</sup>**

- Primary sweeping
- Refresher sweeping
- Mechanical sweeping
- Street cleaning

**8**



**9**

## 9. PUBLIC WATER SERVICES

**Total: 0,11 hm<sup>3</sup>**

- Collection, treatment and distribution of drinking water
- Water resources management and water efficiency (87 %)
- Sewage and Wastewater Treatment

## 10. GREEN CITY AREAS

**Total: 1,02 hm<sup>3</sup>**

- Urban parks, Gardens of special protection, Turia Gardens, Neighborhood gardens and squares
- Boulevards
- Street cleaning
- Maintenance of parks and gardens and public roads

**10**





# CHAPTER 1: TOURIST DESTINATION ARRIVAL

Arrival to the tourist destination, 3 types of arrival:

1

## Tourists

All those people who are not residents of the city of Valencia, nor in its Metropolitan Area, who stay at least 1 night in a regulated accommodation in the city of Valencia.

**1.317.969 Tourists**

**0,87 hm3**

**19,35 m3/ tourist and stay**

2

## Day-trippers

"day tripper" is the person who does not spend the night in the city, but who visits it.

**1.328.875 day-trippers**

**0,12 hm3**

Visitor Reduction from 2019 to 2021 in 39,60%

5,02% France

5,58% Italy

57,70% Spain

90% Europe

709.067 "Fallas" national

213.511 "Fallas" international

406.297 Remainder Day-trippers

**4,96 m3/ day-tripper**

**1,39 hm3**

## Cruise passengers

1-day visitors who arrive in the city on a cruise ship, not staying overnight in the city, have been considered under this denomination.

**130.869 Cruise passengers**

**14,48m3/ Cruise passenger**

130.869 Cruise passenger

95 Cruises

1378 passenger/cruise average

3

4

**Total Water Footprint: 2,38 hm3**

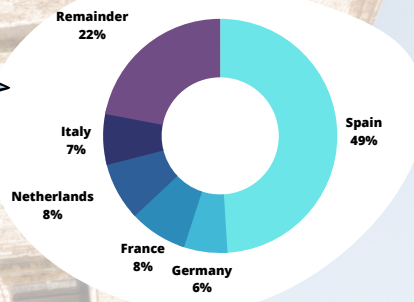
# CHAPTER 2. REGULATED ACCOMMODATION

**Tourist accommodation:**

**10,47 hm<sup>3</sup>**



**2,46 Average overnight stays**



**53,54%**

Occupancy rate by bed

**44,05%**

Occupancy rate by room

**3.245.973 Overnight stays**

**Water Footprint breakdown:**

**DRINKING WATER SUPPLY**

**0,84 hm<sup>3</sup>**

**Blue WF**

**SEWAGE AND WASTEWATER TREATMENT**

**9,64 hm<sup>3</sup>**

**Grey WF**

Accommodation type	Number of accommodation	Number of rooms	Number of beds
5-star	8,00	1.002,00	2.008,00
4-star	41,00	5.115,00	9.965,00
3-star	46,00	2.357,00	4.565,00
2-star	16,00	741,00	1.170,00
1-star	6,00	115,00	224,00
HOSTELS/B&B/TOURIST APARTMENTS	94,00	1.297,00	3.214,00
CAMPINGS/ GUESTHOUSES	2,00	220,00	1.021,00
REGISTERED HTUs	5.561,00	5.561,00	26.611,00



# CHAPTERS 3-5: FOOD/CATERING/LEISURE AND PROFESSIONAL ACTIVITIES/SHOPPING

**Total Water Footprint:  
20,82 hm<sup>3</sup>**

Water Footprint derived from  
Food/catering/leisure and  
professional activities/shopping

**126€**

Average  
expenditure tourists  
in València

1

TOURISTS



**13,81  
hm<sup>3</sup>**

**2,73 hm<sup>3</sup>**

day-trippers from  
Valencia region

**3,547 hm<sup>3</sup>**

day-trippers from  
other Spanish  
Regions

2

DAY-TRIPPERS



**36,62€**

Average expenditure  
day-trippers from  
Valencia region

**58,19€**

Average expenditure day-  
trippers from other  
Spanish Regions

**55€**

Average expenditure  
cruise passengers

3

CRUISE  
PASSENGERS



**0,731  
hm<sup>3</sup>**

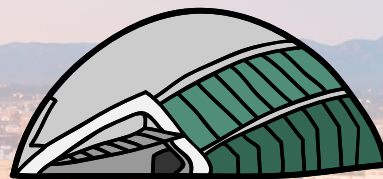
# CHAPTER 6: ENERGY CONSUMPTION

**TOTAL  
WATER  
FOOTPRINT**

**0,55 hm<sup>3</sup>**



**0,22 hm<sup>3</sup>**



**0,14 hm<sup>3</sup>**

**PUBLIC  
LIGHTING**

**LIGHTING OF  
HISTORIC AND  
SPORT  
BUILDINGS**

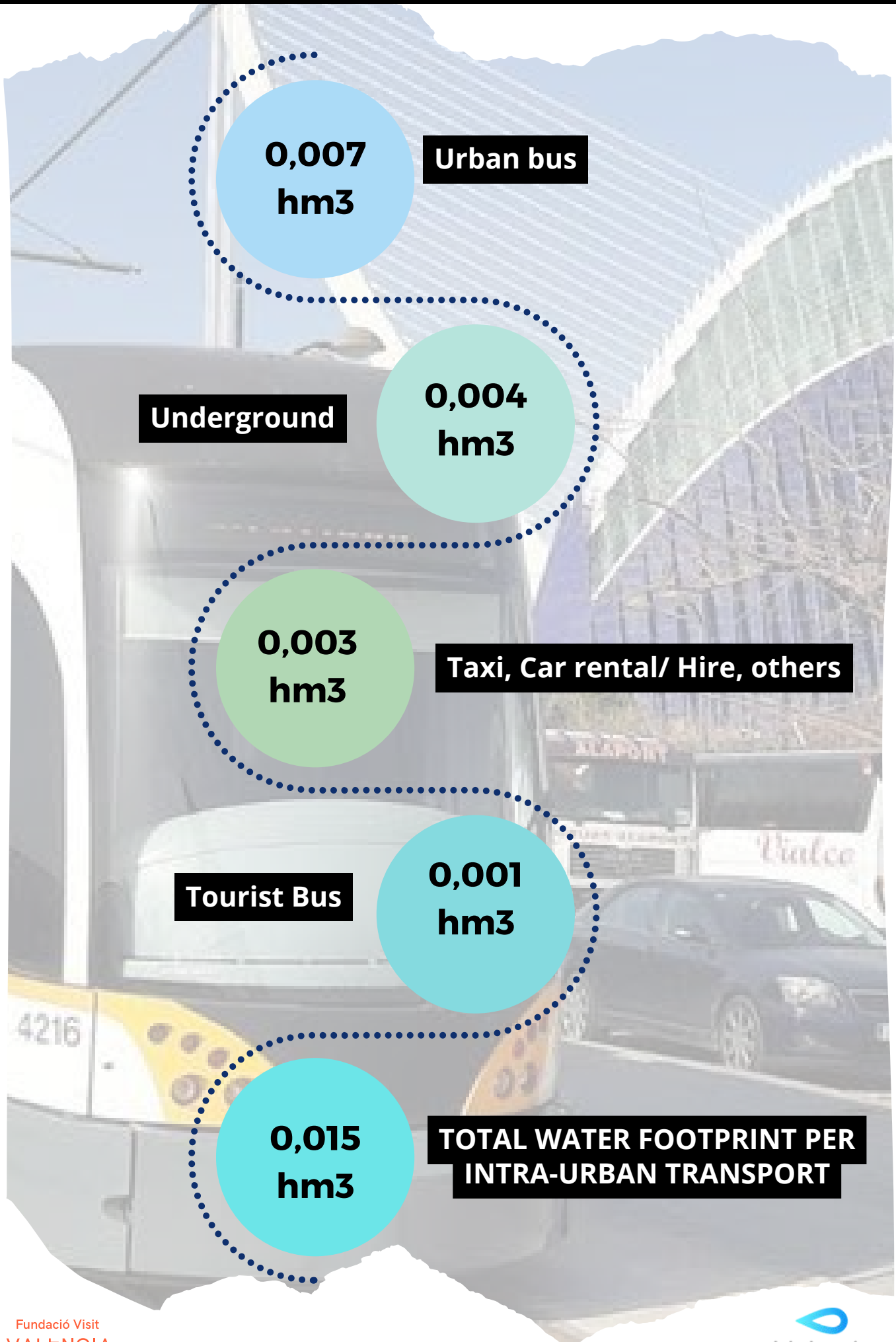
**0,0024 hm<sup>3</sup>**

**WATER  
CYCLE**

**0,19 hm<sup>3</sup>**

**OCEANOGRÀFIC**

# CHAPTER 7: CITY TRANSPORT SYSTEM





# CHAPTER 8: STREET CLEANING



**STREET  
NUMBER**

**3.188**

**PRIMARY  
SWEEP**

**1.132.412  
meters**



**REVIEW  
SWEEP**

**109.852  
meters**



**STREET  
CLEANING**

**1.330.906  
meters**



**TOTAL  
WATER  
FOOTPRINT**

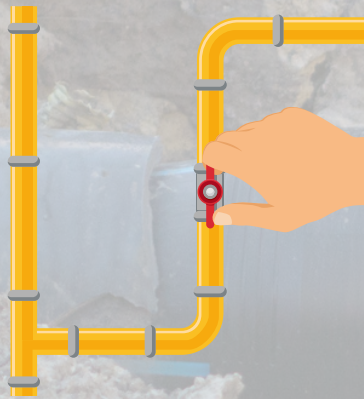
**0,000000305  
hm<sup>3</sup>**



# CHAPTER 9: PUBLIC WATER SERVICES

**TOTAL WATER FOOTPRINT**

**0,011 hm<sup>3</sup>**



**EUROPE'S FIRST MAJOR CITY WITH A CLEAR LODESTAR TO ACHIEVE CARBON NEUTRALITY IN WATER CYCLE MANAGEMENT**

**1**



**2**



**THE CITY WITH THE HIGHEST WATER EFFICIENCY (87 %) BY SMART METERING IN EUROPE**

# CHAPTER 10: CITY GREEN AREAS

**Water  
Footprint:  
1,02 hm<sup>3</sup>**



**EVAPOTRANSPIRATION**

**0,475 Hm<sup>3</sup>**

**CLEANING WATER**

**0,0601 Hm<sup>3</sup>**

**URBAN  
PARCS**

**0,067 hm<sup>3</sup>**

**TURIA  
GARDENS**

**0,141 hm<sup>3</sup>**

**BOULEVARDS**

**0,048 hm<sup>3</sup>**

**GARDENS OF SPECIAL  
PROTECTION**

**0,059 hm<sup>3</sup>**

**NEIGHBORHOOD  
GARDENS AND  
SQUARES**

**0,162 hm<sup>3</sup>**

**IRRIGATION WATER FOR  
GREEN AREAS AND  
STREET CLEANING**

**0,060092 hm<sup>3</sup>**

Fundació Visit  
VALENCIA